

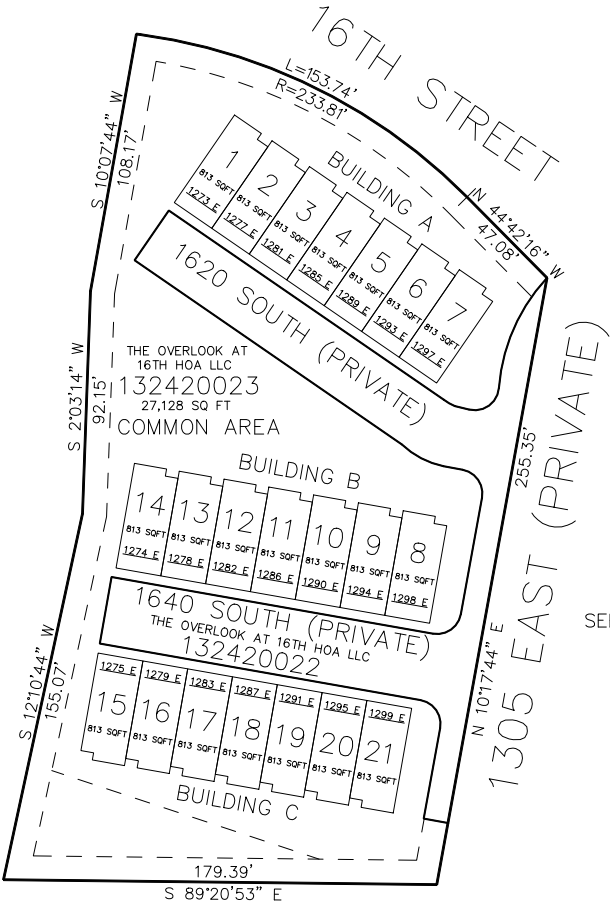
PART OF THE SW.1/4, OF SECTION 22, T.6N., R.1W., S.L.B. & M.
THE OVERLOOK AT 16TH TOWNHOMES

IN OGDEN CITY
SCALE 1" = 40'

TAXING UNIT: 25

SEE PAGE 72

BLDG	UNIT	SERIAL #	OWNERSHIP
A	1	132420001	CC SUMMERHILL LLC
	2	132420002	JASON GLENN & WF RACHEL MAE
	3	132420003	KIRK HOUSER & WF AMY
	4	132420004	BREITEN J ANDERSON & BRAYDAN D SLACK
	5	132420005	HAILEY DANIELS KREY & WF MCKAY BYRON
	6	132420006	KEHM MED LLC
	7	132420007	MATTHEW THOMAS FANKHAUSER
B	8	132420008	JAIME SKELTON & SAMUEL SKELTON
	9	132420009	ROBERT WADE WALLACE & WF SAMANTHA SOWERS
	10	132420010	HOLLY MONTANO
	11	132420011	JAYDEN A WRIGHT & CONNOR O BERG
	12	132420012	TANNER J SMITH & WF ELIZA J WOOD
	13	132420013	WESLEY STATEN BOHN
	14	132420014	KHANH HONG TRA & LINH MY PHAM
C	15	132420015	THE OVERLOOK AT 16TH LLC
	16	132420016	THE OVERLOOK AT 16TH LLC
	17	132420017	THE OVERLOOK AT 16TH LLC
	18	132420018	THE OVERLOOK AT 16TH LLC
	19	132420019	THE OVERLOOK AT 16TH LLC
	20	132420020	THE OVERLOOK AT 16TH LLC
	21	132420021	THE OVERLOOK AT 16TH LLC



SEE PAGE 72

SEE PAGE 72

10' UTILITY & DRAINAGE EASEMENTS EACH
SIDE OF PROPERTY LINES AS INDICATED
BY DASHED LINES EXCEPT AS OTHERWISE
SHOWN.

FOR COMPLETE SURVEY DATA SEE
ORIGINAL DEDICATION PLAT IN
BOOK 95, PAGE 86 OF RECORDS.